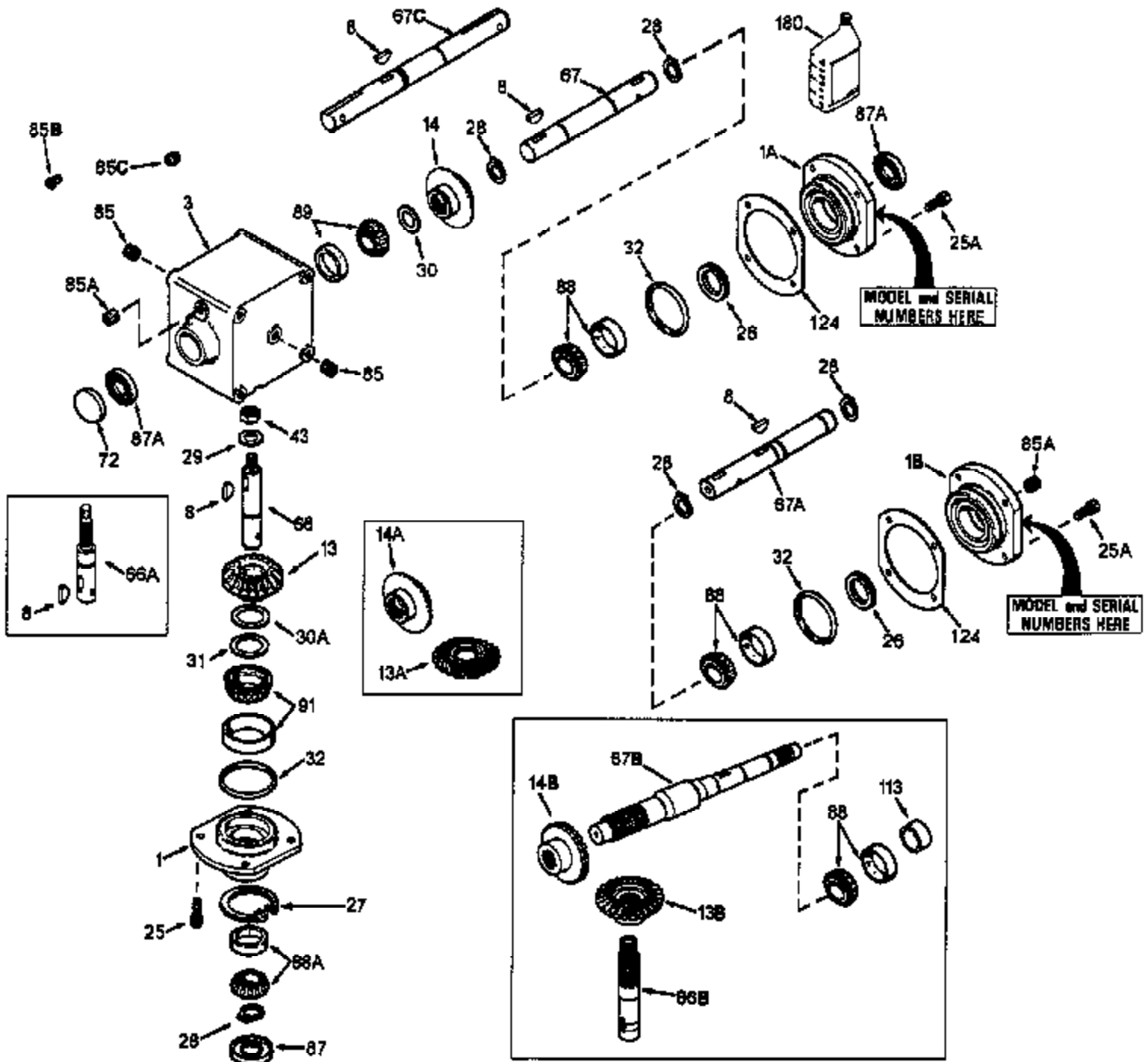


JOIST
DAS ORIGINAL

ILLUSTRATION SHOWS TYPICAL PARTS ONLY. ORDER BY PART NUMBER. PARTS NOT LISTED ARE SUPPLIED BY OEM.





| Ref # | Part Number | Qty | Description |
|-------|-------------|----------|---|
| 1A | 786105 | | Retainer Cap |
| 1 | 786104A | | Retainer Cap |
| 3 | 770076 | | Right Angle Drive Housing |
| 8 | 792114 | | Woodruff Key No. 807 |
| 13A | 778301 | | Spiral Bevel Gear & Pinion (25 & 26 t eeth) |
| 25 | 792037 | | Screw, 5/16-18 x 1" |
| 25A | 792037 | | Screw, 5/16-18 x 1" |
| 26 | 780137 | | Load Ring |
| 27 | 792112 | | Retaining Ring |
| 28 | 792113 | | Retaining Ring |
| 29 | 792115 | | Flat Washer |
| 30 | 780131 | | Shim |
| 31 | 780138 | | Shim |
| 32 | 788063 | Peerless | "O" Ring |
| 43 | 792110A | | Hex Jam Nut, 3/4-16 |
| 66 | 776281 | | Input Shaft (5.38" long) |
| 67 | 776292 | | Output Shaft (7.890" long) |
| 72 | 792111 | | Plug |
| 85 | 792116 | | Pipe Plug, 1/4-18 |
| 85A | 792039 | | Pipe Plug, 1/8" |
| 85C | 792118 | | Relief Valve |
| 87A | 788065 | | Oil Seal |
| 87 | 788064 | | Oil Seal |
| 88 | 780132 | | Bearing & Cup Ass'y (SEE REPAIR MANUA L) |
| 88A | 780132 | | Bearing & Cup Ass'y (SEE REPAIR MANUA L) |
| 89 | 780132 | | Bearing & Cup Ass'y (SEE REPAIR MANUA L) |
| 91 | 780134 | | Bearing & Cup Ass'y (SEE REPAIR MANUA L) |
| 124 | 780136 | | Retainer Cap Shim |
| 180 | 730229A | | Gear Oil 80W90 |